



KEY FEATURES:



Maintenance
Inside the hull



Control Option
Single Colour: On/Off or DALI
RGBW: DMX



Driver
External



Growth Resistant Lens
Borosilicate Glass



Power
110-240 VAC



Installation
Inside the hull



Test pressure
N.A



Hull Material
N.A



Boat Size
N.A



Lumens
Single: 20,000 /RGBW: All
colours @ 20,000 lumens



Kelvin
Single Colours- 6500
RGBW: N.A



Beam Angle
HP3: 100 degrees
RGBW: 110 degrees

QT-LED

QT-LED-130-RETRO

Colour:



- The QT-130 Retro LED underwater light features an LED projector that can be fitted into existing metal halide underwater lights allowing an easy upgrade to LED without changing the body or hauling the boat.
- The QT-130 Retro LED is designed for boats with the original large screwed Bulleyt, UL Ti MATE 130 fixed and UL Ti MATE 130 SA ranges from Underwater Lights Ltd.
- With its 100/110 degrees beam angle and its LED BALL adjustment, the flush fixture provides a perfect spread of light.
- With 20,000 lumens of light power for single colour and its wide beam angle, installation requires no modification to class approvals and fitting these fixtures can take as little as one hour to totally transform an existing lighting setup.



QT-LED

QT-130-RETRO

RETROFIT LED SERVICED FROM INSIDE

MOUNTING

Hull Material	N.A
Boat size	N.A
Spacing	N.A
Beam Angle	HP3: 100° - RGBW: 110°
Installation Angles	N.A

TECHNICAL

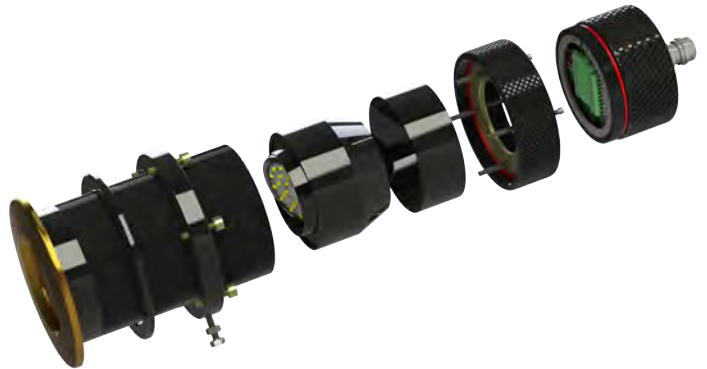
Lumens	Single colours-20,000/ RGBW-N/A
Kelvin	Single Colours-6500/RGBW-N/A
Typical LED Life Expectancy	40,000 hrs
Min-Max Operating Voltage	110-240VAC
Current Amp Draw	1.4A-0.7A
Driver Type	External
Driver Output	HP3: 55 VDC-2.8 A RGBW: 96 VDC-0.7 A
Driver Watts	HP3: 150W/ RGBW: 144 Watts
Control	Single:On/Off or DALI-RGBW: DMX
Bonding	Locking ring
EMF Earth Leakage	0.27mA/19.5mV

PHYSICAL

Length of Fixture	N.A
Diameter of Fixture	N.A
Height of Fixture	N.A
Removal Space Required	152mm (6.11/16")
Total weight	6Kg (13lbs)
Driver Dims (LxWxH)	220x120x90mm
Cable Length	6 meters
Hole Cut out	N.A
Material	N.A
Lens	Toughened borosilicate glass
Maximum Hull Thickness	95mm (3.74")

Part numbers for RETRO

Colour	BULLETT	UL Ti MATE 130 FIXED / SA
White	QT-130-00475-UG-BULL-HP3W	QT-130-00475-(SA)-UG-HP3W
Blue	QT-130-00475-UG-BULL- HP3B	QT-130-00475-(SA)-UG-HP3B
RGB+W	N.A	QT-130-00475-(SA)-UG-RGBW



Evolution through the years..



Large Screwed Bullett
1991 To 2003- RGBW
not available for this
model.



ULTIMATE 130 FIXED
2003 To 2014

ULTIMATE 130 SA
2005 To 2014



VALID FROM MAY 2025