



KEY FEATURES:



Maintenance
Inside the hull



Control Option
Single Colour: On/Off or DALI
RGBW: DMX



Driver
External



Growth Resistant Lens
Borosilicate Glass



Power
110-240 VAC



Installation
Inside the hull



Test pressure
N.A



Hull Material
N.A



Boat Size
N.A



Lumens
Single: 20,000 /RGBW: All
colours @ 20,000 lumens



Kelvin
Single Colours- 6500
RGBW: N.A



Beam Angle
HP3: 100 degrees
RGBW: 110 degrees

QT-LED

SEAVISION- THRU-HULL-RETRO



Colour:



BLUE



WHITE



RGBW

- The Seavision Retro LED underwater light features an LED projector that can be fitted into existing metal halide underwater lights allowing an easy upgrade to LED without changing the body or hauling the boat.
- The Seavision Retro LED is designed for boats with the original SV10 HID, ranges from Seavision
- With its 100/110 degrees beam angle and its LED BALL adjustment, the flush fixture provides a perfect spread of light.
- With 20,000 lumens of light power for single colour and its wide beam angle, installation requires no modification to existing class approvals and fitting these fixtures can take as little as one hour to totally transform an existing lighting setup.



QT-LED

SEAVISION- THRU-HULL-RETRO

RETROFIT LED SERVICED FROM INSIDE

MOUNTING

Hull Material	N.A
Boat size	N.A
Spacing	N.A
Beam Angle	HP3: 100° - RGBW: 110°
Installation Angles	N.A

TECHNICAL

Lumens	Single colours-20,000/ RGBW-N/A
Kelvin	Single Colours-6500/RGBW-N/A
Typical LED Life Expectancy	40,000 hrs
Min-Max Operating Voltage	110-240VAC
Current Amp Draw	1.4A-0.7A
Driver Type	External
Driver Output	HP3: 55 VDC-2.8 A RGBW: 96 VDC-0.7 A
Driver Watts	HP3: 150W/ RGBW: 144 Watts
Control	Single:On/Off or DALI-RGBW: DMX
Bonding	Locking ring
EMF Earth Leakage	0.27mA/19.5mV

PHYSICAL

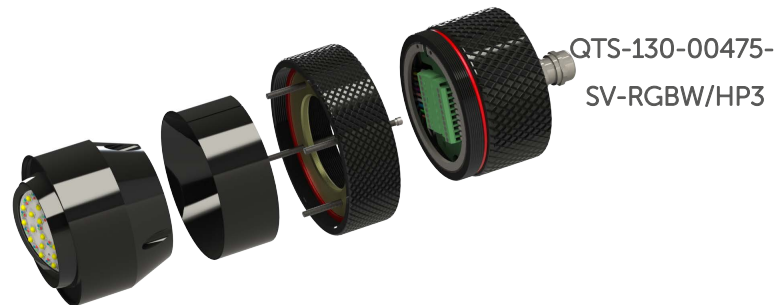
Length of Fixture	N.A
Diameter of Fixture	N.A
Height of Fixture	N.A
Removal Space Required	152mm (6.11/16")
Total weight	6Kg (13lbs)
Driver Dims (LxWxH)	220x120x90mm
Cable Length	6 meters
Hole Cut out	N.A
Material	N.A
Lens	N.A

Part numbers for RETRO

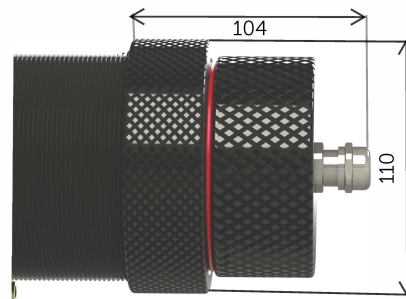
Colour	Part Numbers	Lumen output	Controller
White	QTS-130-00475-SV-UG-HP3W	20,000	On/Off/ Dali
Blue	QTS-130-00475-SV-UG- HP3B	N.A	On/Off/ Dali
RGBW	QTS-130-00475-SV-UG- RGBW	All colours @ 20,000	DMX



Existing
Seavision
housing



QTS-130-00475-
SV-RGBW/HP3



QTS-130-00475 -
SV-RGBW/HP3-
REAR



VALID FROM AUGUST 2025



VAT NO: 5564425 31
Registered in England No: 2348038

The Great Dunton Forge, London Road Dunton Green,
Sevenoaks, Kent TN13 2TD UK
T: +44 (0) 1732 455753
E: uwl@underwaterlights.com
UNDERWATERLIGHTS.COM

©2024 Underwater Lights Limited All Rights Reserved.
Underwater lights limited reserves the right to change specifications without notice.